



## YOUR COMMUNITY FOUNDATION COMMITTEE

CROSS CREEK RANCH



**“Your Community Foundation Committee,”** or what The Johnson Development Corp (JDC) calls **YCFC**, for short, helps give residents the pride and comfort in knowing the unsurpassed quality expected from each JDC community will be maintained, sustained, and even enhanced throughout the years.

### How does YCFC work?

A foundation fee is collected at each closing as a percentage of the sales price of each home. These funds are then set aside for such purposes as the Community Association Board, upon recommendation of **YCFC**, deems beneficial to the community. Each time a property is re-sold, the fee is once again collected. Hence, the reserve, which always stays within the community, perpetuates for the life of the development.

### Who Benefits from YCFC?

**YCFC** partners with the Community Association Board to help select projects including, but not limited to:

- Amenities
- Community events, clubs, groups, and sports
- Health and wellness
- Technology
- Education
- The environment
- Enhancements and improvements to infrastructure within the development

### How is the money spent?

An appointed group of homeowners (**YCFC**) works in concert with the Community Association Board to review grant applications and select projects and programs believed to best reflect the needs and interests of the community. In addition, foundation fees can fund community artwork, holiday decorations, and special events.





# Examples of YCFC working for



## Beautiful Scenic Overlook

Residents at **Cross Creek Ranch** enjoy observing wetland plants, identifying birds and wildlife, and accessing nature trails from the community's boardwalk and viewing platforms. The overlook of the community's Polishing Pond, a 50-acre natural habitat and lush oasis that has become a permanent home for fish and turtles, was funded through foundation fees.



## State-of-the-Art Fitness Center

A fitness center in your own backyard is complete with the latest cardio equipment, free weights, and spin cycles. A dedicated fitness staff also provides residents with a variety of fitness classes, programs and personal training.



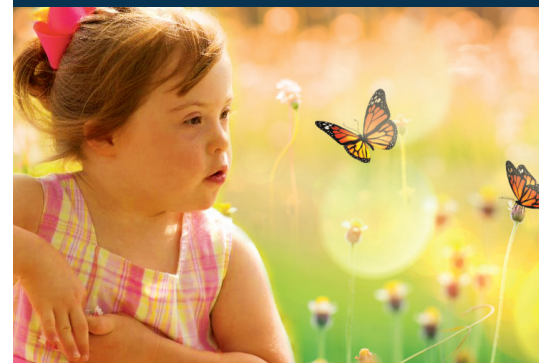
## Supporting Local Schools

When local school budgets fall short, foundation fees can help. Thousands of dollars have been donated to the KISD and LCISD elementary, middle, and high schools that serve **Cross Creek Ranch** residents. The funds help educators purchase desired equipment, supplies, and provide extra-curricular programming.



## Children's Catastrophic Fund

Residents of Cross Creek Ranch take pride knowing their community supports families who are challenged with the financial stress of caring for a child with a catastrophic illness or catastrophic congenital / genetic disorder. The Children's Catastrophic Fund (CCF) has been established to help ease financial pressures through grants to deserving families. The fund, supported by foundation fees, says, "We are here for you, and we care."



## Other JDC communities where foundation fees are making a difference!



## Impressive Track Record

Since January 1, 2000, over \$7,000,000 has been invested back into Sienna Plantation by its Community Services Foundation. The funds have enhanced community services and resources by investing in Education, Technology, Health & Wellness, the Environment and such Community Events as the Spring Fling, July 4th Fireworks Spectacular, the Spring and Fall Concert Series, Outdoor Movies, Camp Outs, Bingo Parties and Road Trips. Additionally, the Foundation has upgraded ballfields and playground equipment, replaced recreation amenities, provided handicap accessible swings in parks, installed bronze art sculptures throughout the community and has funded a Children's Catastrophic Fund to assist residents dealing with debilitating health issues. It's an impressive track record that has enhanced the quality of life for all Sienna residents without increasing Homeowner dues or requiring special assessments to fund long term maintenance requirements.